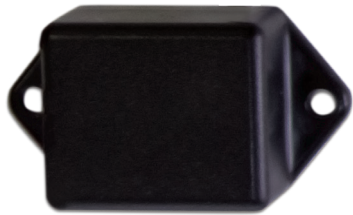


Fuel Tag

Secure access to primary fuels and secondary fluids



The Fuel Tag works in conjunction with the Ward Hose Module for automated fueling access. Easily programmed, its unique ID ensures only specified assets can initiate fueling and receive the correct fuel type and volume.

A small electro-magnetic antenna (EM) and a long lasting internal battery sealed inside the plastic enclosure provides reliable, short range communication for controlling access to fuel dispenser pumps.

Installed next to the filler neck, industrial grade ABS plastic withstands the harshest environments

Fuel Tags may also be mounted on hand-held assets such as lawn mowers, weed eaters, gas cans and other small liquid containers.

i See the Ward Capabilities Brochure for more product offerings.

Specifications

Communication	EM wireless interface with the Hose Module and SimplyFuel Toolkit programmer
Range	Fuel Tag to SFT (Programmer) - <4"
Temperature	-40° F to 185° F (-40° C to 60° C)
Dimensions	2.4 x .79 x 1.9 inches (W x D x H)
Weight	1.6 oz

Contact

www.ejward.com/contact

